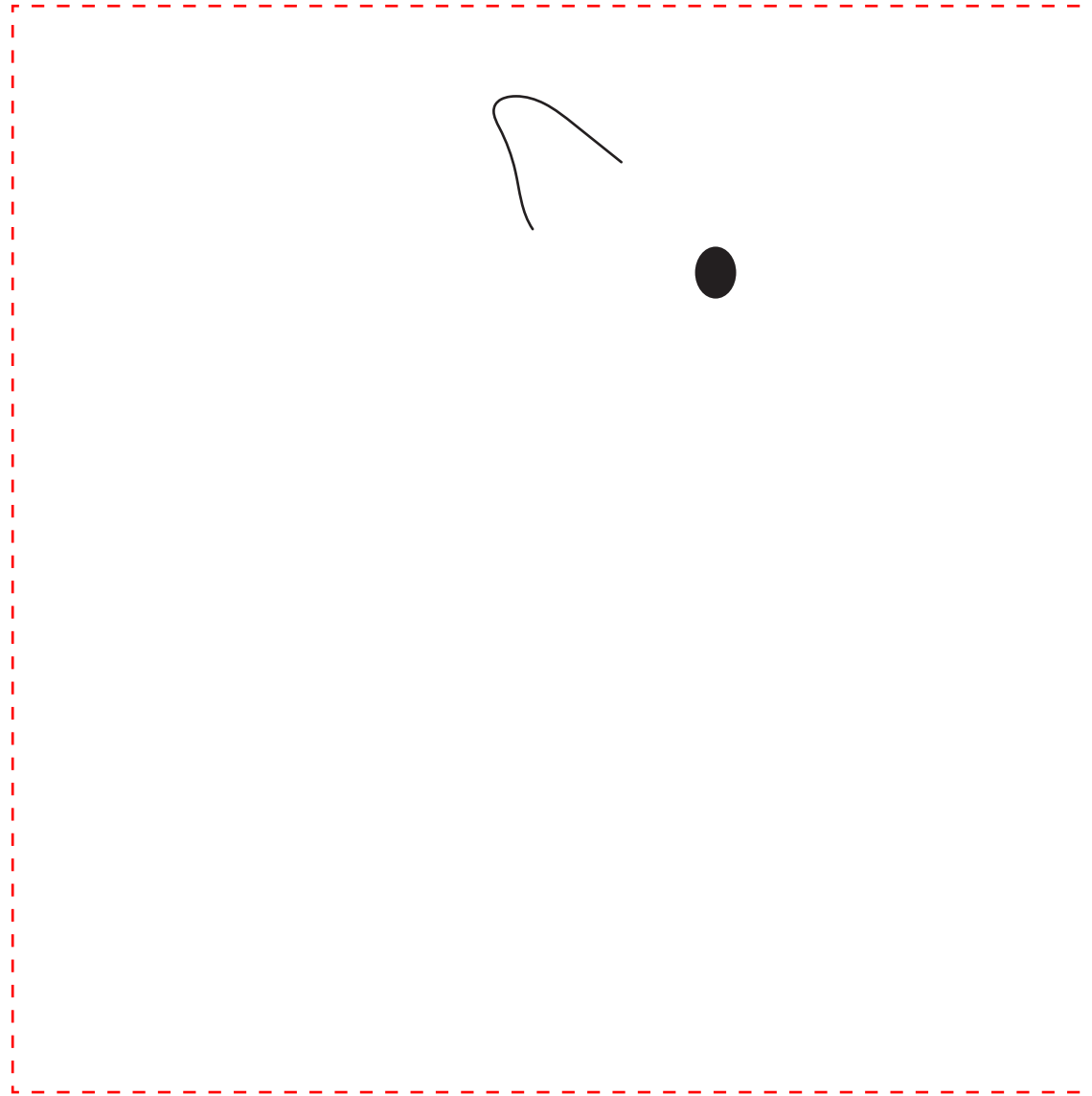
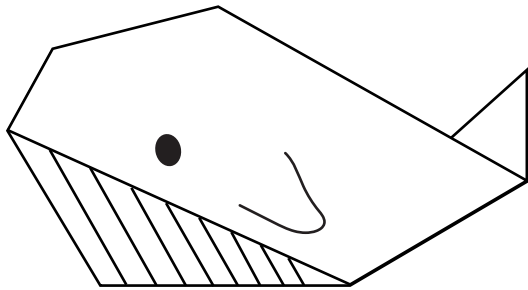
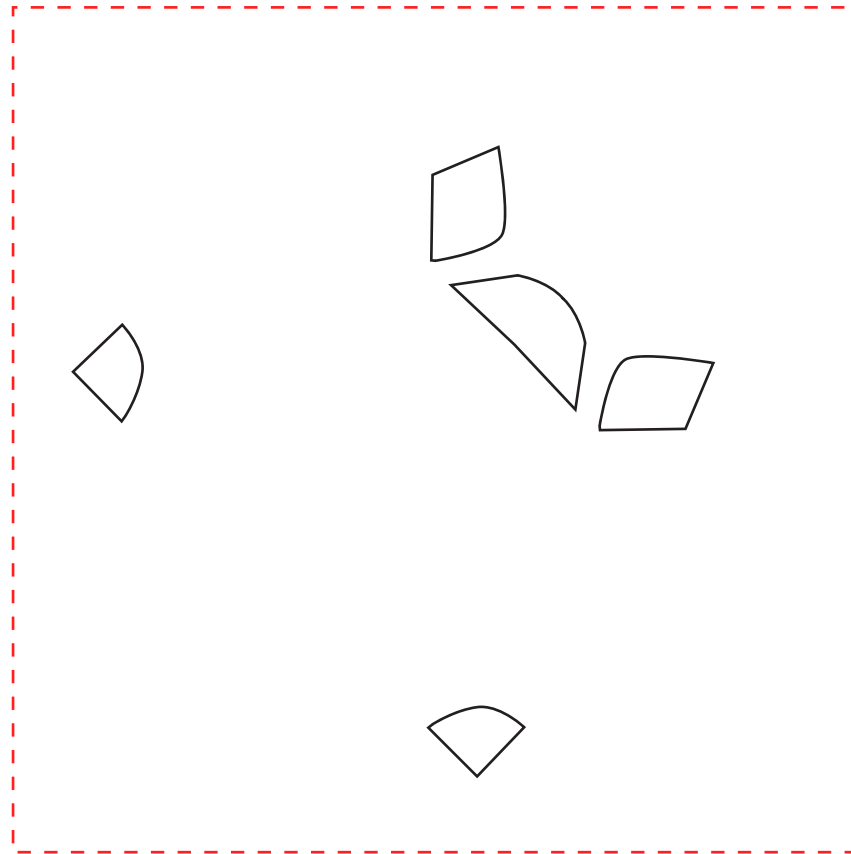
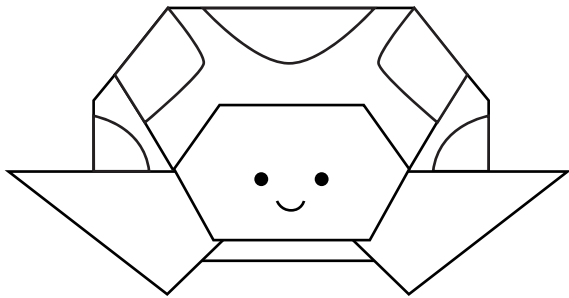


WHALE



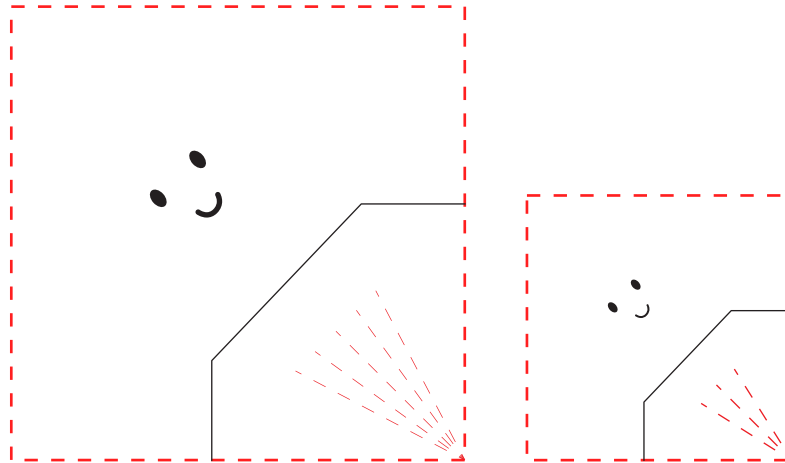
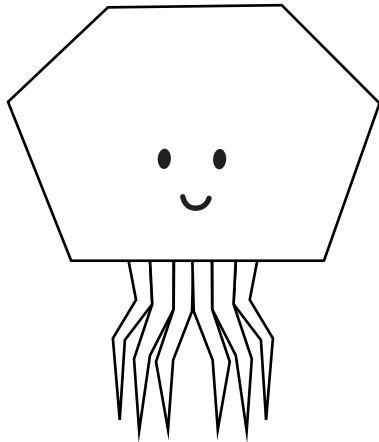
ແສກນຸ
ວິຮຳ

TURTLE



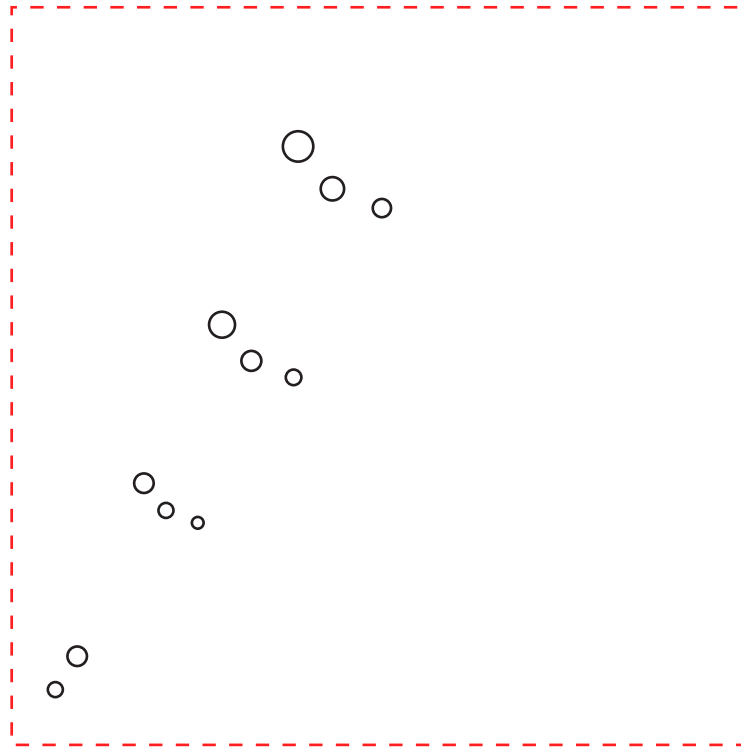
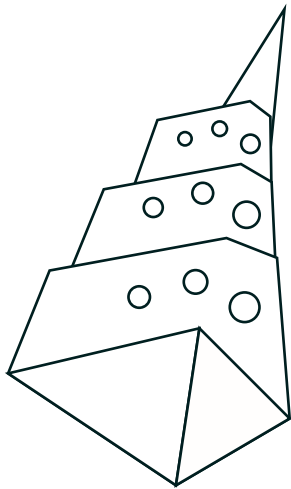
ແສກນຸ
ວິຮຳ

JELLYFISH



ແສກນຸ
ວິຣົກ

SHELL

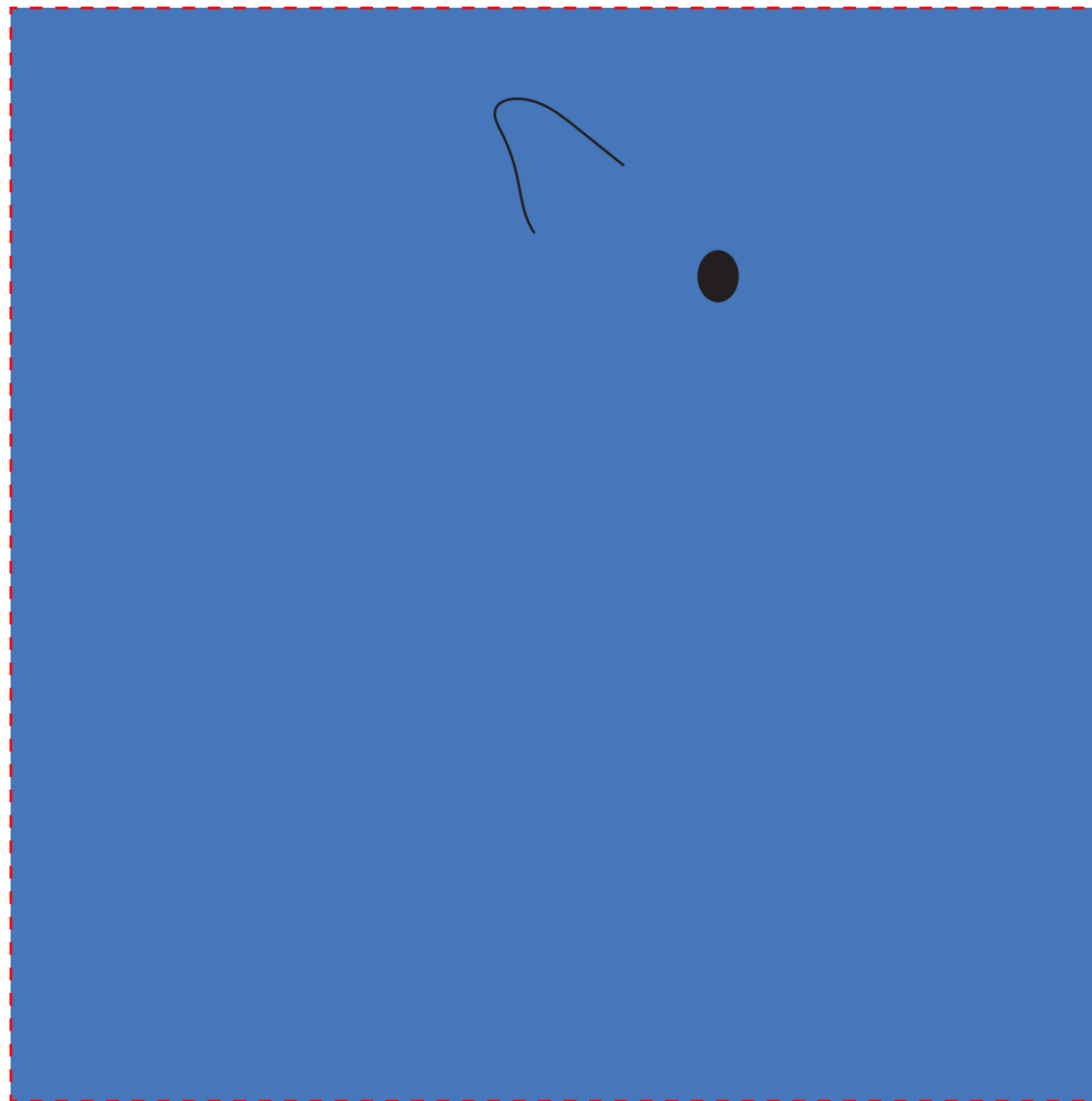
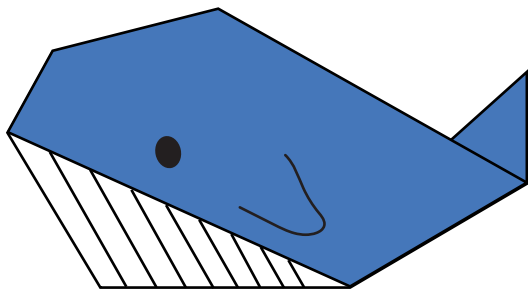


แอสกนุก
วืรท้

An underwater scene with bubbles of various sizes floating around. On the left, there is a piece of seaweed with long, thin blades. In the center, there is a large, rounded rectangular box with a question and three horizontal lines for writing. On the right, there is a large, branching coral reef structure. At the bottom right, there is a logo for 'ESF English Style Fun' featuring two small figures sitting on a rock.

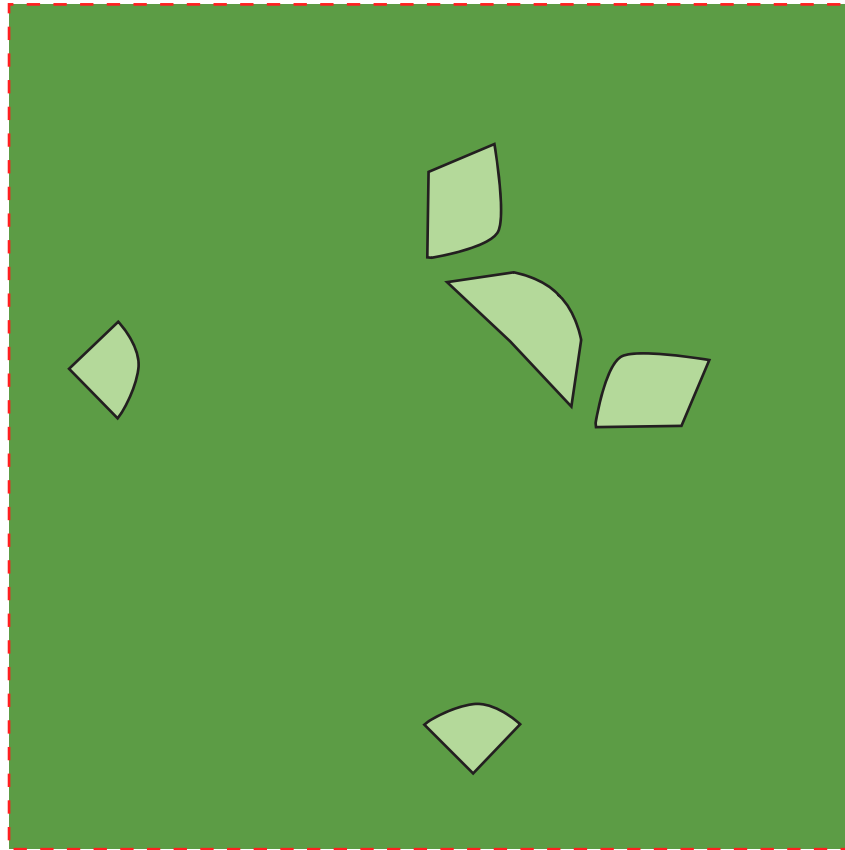
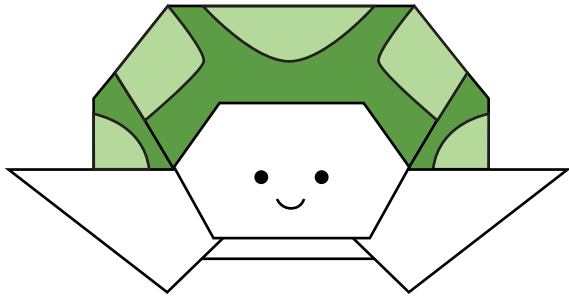
Which sea animal is your favorite and why?

WHALE



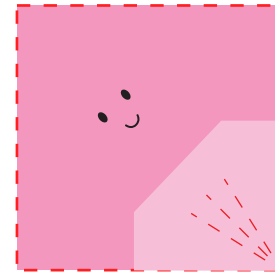
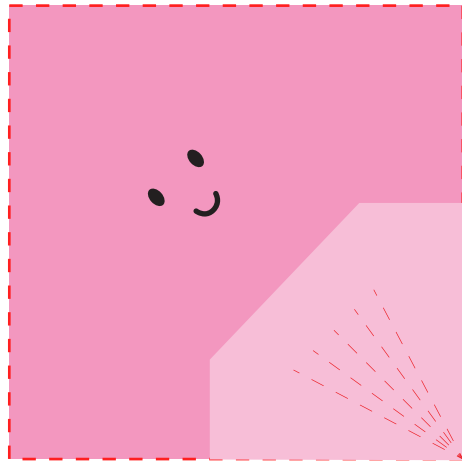
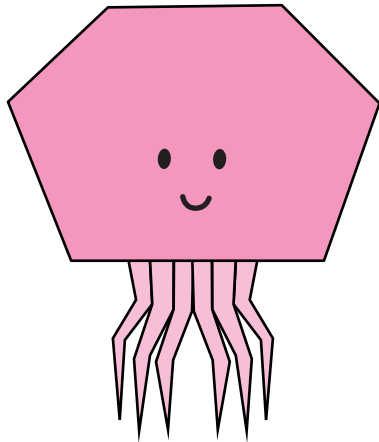
ແສກນຸ
ວິຣົກ

TURTLE



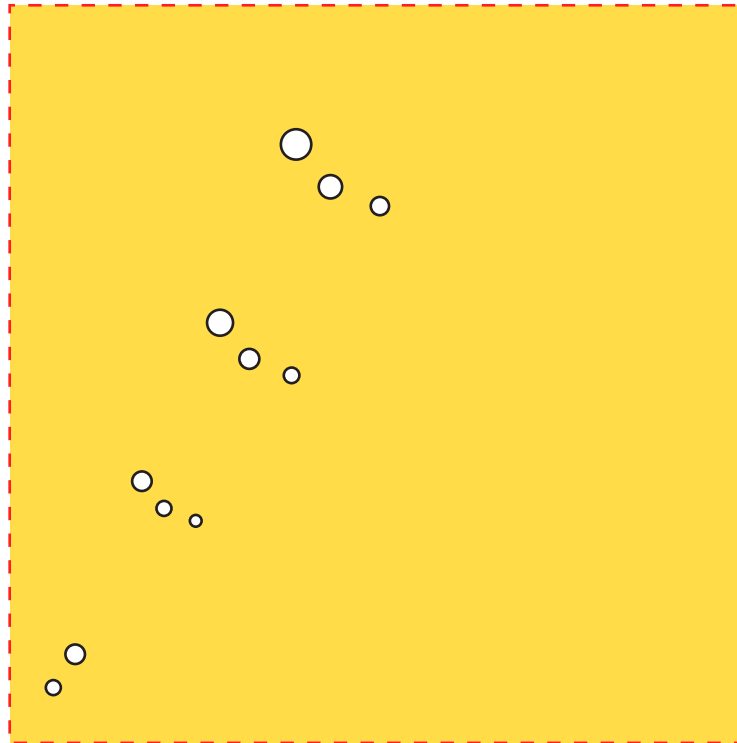
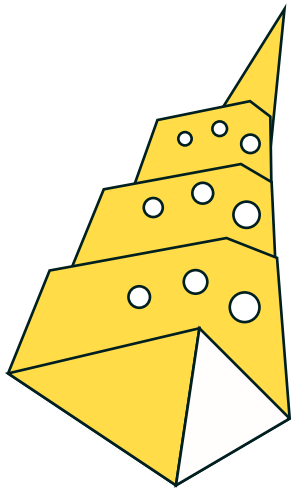
ແສກນຸ
ວິຮຳ

JELLYFISH



ແສກນຸ
ວິຮຳ

SHELL



แอสกนุก
วีรภั

An underwater scene with a light blue background and a sandy bottom. On the left, there is a rock with green seaweed. In the center, a white rounded rectangle with an orange border contains a question and three horizontal lines for writing. On the right, there is a large pink coral reef and a smaller blue coral reef. Bubbles of various sizes are scattered throughout the water. In the bottom right corner, there is a logo for 'English Style Fun' featuring a girl and a boy sitting on a rock with an open book.

Which sea animal is your favorite and why?
